

The logo for Warimpex, featuring the word "warimpex" in a white, lowercase, sans-serif font. A small orange accent mark is positioned above the letter 'i'.

warimpex

A photograph of a modern, multi-story office building with a glass and dark metal facade. The building is illuminated from within, and the scene is set in winter with snow on the ground. A dark blue semi-transparent box is overlaid on the bottom half of the image, containing text.

ESTABLISHED IN 1959

*Warimpex  
Projects*

2024



## Office assets

| Page | Asset   | Area                            | Warimpex share |
|------|---|---------------------------------|----------------|
| 10   | Ogrodowa Office, Łódź, PL                         | 28,400 m <sup>2</sup>           | 100%           |
| 11   | Red Tower, Łódź, PL                               | 12,400 m <sup>2</sup>           | 100%           |
| 12   | Mogilska 41 Office, Cracow, PL                    | 5,100 m <sup>2</sup>            | 100%           |
| 13   | Mogilska 43 Office, Cracow, PL                    | 12,900 m <sup>2</sup>           | 100%           |
| 14   | Mogilska 35 Office, Cracow, PL                    | 11,900 m <sup>2</sup>           | 100%           |
| 15   | Erzsébet Offices, Budapest, HU                    | 14,400 m <sup>2</sup>           | 100%           |
| 16   | Business Tower "Zeppelin", St. Petersburg, RU     | 15,500 m <sup>2</sup>           | 100%           |
| 17   | Business Towers "Jupiter 1&2", St. Petersburg, RU | 16,800 m <sup>2</sup>           | 100%           |
| 18   | Avior Tower, St. Petersburg, RU                   | 18,600 m <sup>2</sup>           | 100%           |
| 19   | AirportCity Parking Complex, St. Petersburg, RU   | 445 cars + 2,200 m <sup>2</sup> | 100%           |

## Hotel assets

| Page | Hotel                                     |                  | Rooms | Warimpex share |
|------|---|------------------|-------|----------------|
| 22   | InterContinental*****, Warsaw, PL         | lessee, operator | 414   | 50%            |
| 23   | greet hotel Darmstadt ***S, Darmstadt, DE | owner, operator  | 330   | 100%           |
| 24   | Airportcity Plaza****, St. Petersburg, RU | owner, operator  | 294   | 100%           |

## Major projects in development

| Page |   | Completion Status | Opening Date | Area                  | Warimpex share |
|------|---|-------------------|--------------|-----------------------|----------------|
| 28   | Chopin co-living/office project, Cracow, PL | in planning       | 2026         | 20,600 m <sup>2</sup> | 100%           |
| 29   | MC55 multi-use building, Białystok, PL      | in planning       | 2026         | 38,500 m <sup>2</sup> | 100%           |
| 30   | West Yard 29, Darmstadt, DE                 | in planning       | 2026         | 12,500 m <sup>2</sup> | 100%           |
|      | West Yard 21–25, Darmstadt, DE              | in planning       | 2026/27      | 18,000 m <sup>2</sup> | 100%           |

*Reference projects see page 34*

## *Warimpex at a glance*

---

Warimpex is a real estate development and investment company that was founded in 1959.

The firm is headquartered in Vienna and has been listed on the stock exchanges in Vienna and Warsaw since 2007. Warimpex develops properties and operates them itself until the time at which the highest added value can be realised through sale.

The company optimally combines the long-term strategic planning and short decision-making channels of a family-run business with the transparency and financial flexibility of a listed firm.

In addition, Warimpex has more than 60 years of business experience in Central and Eastern Europe, where it serves as a true pioneer, for example with the development of the region's first design hotel.

Warimpex has developed properties worth more than one billion euros over the past 40 years and is deeply anchored in Poland, Russia, Hungary, Germany, and Austria to this day.

## *Investment Case*

---

- Many years of success as a family-run company in the development and sale of properties, as part of the establishment of its portfolio
  - Broadly diversified portfolio in terms of regions and segments
- Synergies from business activities as a property developer and property owner
- Management team with over 40 years of experience on the CEE real estate market
  - External valuations guarantee transparency

## *Management Board*

---

Franz Jurkowitsch, CEO

Daniel Folian

Alexander Jurkowitsch

Florian Petrowsky





## *CoWork by Memos*

In a world where change is the only constant, coworking is aligning with our business needs more than ever. A flexible workspace is the new standard.

You use it often, or just periodically.

For a brief period or a prolonged time, always on flexible terms. When you need that extra space, or sometimes, simply a desk. A coworking space serves your needs, without the burden of a longtime commitment.

### **Architecture**

The offices are characterised by sophisticated contemporary architecture, marked by individuality, functionality and the use of natural, durable materials.

### **Positioning**

CoWork by Memos is a coworking brand with considerable locational flexibility due to particularly high investment efficiency.

### **Interior design**

CoWork by Memos has a high recognition value. The design elements are sourced from local artists, each location receiving a tailored unique interior design to underline the professionalism and warmth of the workspace.



by memos

**MOGILSKA**  
**Mogilska**  
**OGRODŃWA**  
**RED TOWER**









*Office Assets*

warimpex

# Ogrodowa Office

ŁÓDŹ



★★★★☆ EXCELLENT

Address:

ul. Ogrodowa 8  
PL-91-065 Łódź

**OGRODOWA** OFFICE

**Warimpex share:** 100%

**Opened:** 2018

## Location

- Central location
- High visibility
- In vicinity of Manufaktura Shopping centre and ul. Piotrkowska
- Direct connection to public transportation

## Facts

- Class A office
- 7 floors above ground (office space, retail space)
- 2 underground levels (with 286 parking spaces)
- 24,931 m<sup>2</sup> leasable office space and 3,491 m<sup>2</sup> leasable retail space
- Leasable space per floor approx. 4,700 m<sup>2</sup>



## Red Tower

ŁÓDŹ

Address:

ul. Piotrkowska 148/150

PL-90-063 Łódź



★★★★☆ Very Good



**Warimpex share:** 100%

**Constructed:** 1978

**Renovated:** 2008

**Purchased:** 2022

### Location

- Prime location in the city centre of Łódź
- At the pedestrian zone of Piotrkowska street
- Direct connection to public transportation at Pilsudskiego street
- Vicinity of public areas and shops

### Facts

- Class B business tower with a total gross area of 15,000 m<sup>2</sup> (net lease area 12,400 m<sup>2</sup>)
- One of the tallest office buildings in Łódź with 20 floors, and office space with flexible layout options (floor net area 615 m<sup>2</sup>)
- 22 parking spaces
- Coworking space and serviced offices



# Mogilska 41 Office

CRACOW

Address:

ul. Mogilska 41

PL-31-545 Cracow



**Warimpex share:** 100%

**Constructed:** 1967

**Renovated:** 2019

**Purchased:** 2017

## Location

- Prime location in the commercial district of Cracow
- Direct connection to public transportation at Rondo Mogilskie
- Vicinity of courts and public offices

## Facts

- Class B office
- 12 floors above ground (office space)
- 5,088 m<sup>2</sup> leasable office space
- 12 parking spaces
- Leasable space per floor between 200 m<sup>2</sup> and 900 m<sup>2</sup>

# Mogilska 43 Office

CRACOW

Address:

ul. Mogilska 43

PL-31-545 Cracow



★★★★☆ EXCELLENT

## MOGILSKA OFFICE

**Warimpex share:** 100%

**Opened:** 2019

### Location

- Prime location in the business district of Cracow
- Direct connection to public transportation at Rondo Mogilskie and Mogilska Street
- Vicinity of courts and public offices

### Facts

- Class A office
- 9 floors above ground (office space, retail space)
- 2 underground levels (with 203 parking spaces)
- 11,344 m<sup>2</sup> leasable office space and 1,565 m<sup>2</sup> leasable retail space
- Leasable space per floor between 800 and 2,000 m<sup>2</sup>



# Mogilska 35 Office

CRACOW

Address:

ul. Mogilska 35  
PL-31-545 Cracow



★★★★☆ EXCELLENT

**ME** Mogilska 35

**Warimpex share:** 100%

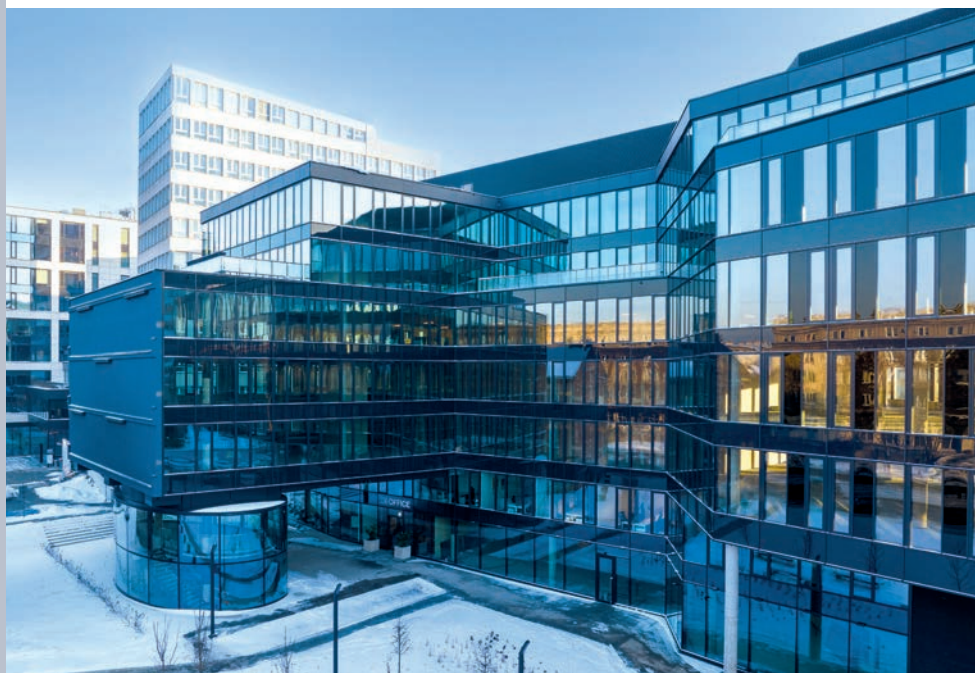
**Opened:** 2023

## Location

- Prime location in the business district of Cracow
- Direct connection to public transportation at Rondo Mogilska and Mogilska Street
- Vicinity of courts and public offices

## Facts

- Class A office
- 7 floors above ground (office space, retail space)
- 3 underground levels (with approx. 264 parking spaces)
- Up to 10,628 m<sup>2</sup> leasable office space and 1,248 m<sup>2</sup> leasable retail space
- Leasable space per floor approx. 1,600 m<sup>2</sup>



# Erzsébet Offices

BUDAPEST

Address:

*Erzsébet királyné útja 1/C*  
 HU-1146 Budapest

**Warimpex share:** 100%

**Constructed:**

Building A: 1963, Building B: 1965

**Acquired:** 2006

**Rental space:** 14,355 m<sup>2</sup>

## Location

- The building is located on the Pest side of the River Danube, close to the intersection of Hungária krt. and highway M3.
- The neighbourhood is characterised by both residential and business buildings.

## Facts

- The office complex consists of two separate office buildings with a total leasable area of 14,355 m<sup>2</sup>.
- Office building A: refurbishment completed to a category A office building in 2015
- Office building B: refurbishment was completed in 2009.
- 157 parking spaces



# AIRPORTCITY Business Tower "Zeppelin"

ST. PETERSBURG

Address:

**Pulkovo**

**International Airport St. Petersburg**

**[www.airportcity.spb.ru](http://www.airportcity.spb.ru)**



**AIRPORTCITY**

ST. PETERSBURG

**Warimpex share:** 100%

**Opened:** 2015

## Location

- 1,500 m from airport Pulkovo, free shuttle bus
- Just off the Pulkovo superhighway
- Close to the Ring Road (Pulkovo Exit)
- Close to high-speed road
- 15 km from the historic centre of the city
- 4 km from the Moskovskaya and Zvezdnaya subway stations, shuttle bus

## Facts

- Total gross building area of 15,600 m<sup>2</sup>
- Class A business tower
- Car parking
- Cafeteria
- LEED Gold certificate





# AIRPORTCITY Business Towers "Jupiter 1 & 2"

ST. PETERSBURG

Address:

*Pulkovo*

*International Airport St. Petersburg*

*www.airportcity.spb.ru*



**Warimpex share:** 100%

**Opened:** 2012

## Location

- 1,500 m from airport Pulkovo, free shuttle bus
- Just off the Pulkovo superhighway
- Close to the Ring Road (Pulkovo Exit)
- Close to high-speed road
- 15 km to the historic centre of the city
- 4 km from the Moskovskaya and Zvezdnaya subway stations, free shuttle bus

## Facts

- Class A business towers with a total gross building area of 18,600 m<sup>2</sup>
- Canteen
- Car parking



# Avior Tower

ST. PETERSBURG

Address:

*Pulkovo*

*International Airport St. Petersburg*

*www.airportcity.spb.ru*



**Warimpex share:** 100%

**Opened:** 2022

## Location

- 1,500 m from airport Pulkovo, free shuttle bus
- Just off the Pulkovo superhighway
- Close to the Ring Road (Pulkovo Exit)
- Close to high-speed road
- 15 km from the historic centre of the city
- 4 km from the Moskovskaya and Zvezdnaya subway stations, shuttle bus

## Facts

- Class A business tower with a total gross building area of 18,635 m<sup>2</sup>
- Canteen
- Car parking

# AIRPORTCITY Parking Complex

ST. PETERSBURG



**Warimpex share:** 100%

**Opened:** 2017

## Location

- 1,500 m from airport Pulkovo, free shuttle bus
- Just off the Pulkovo superhighway
- Close to the Ring Road (Pulkovo Exit)
- Close to high-speed road
- 15 km from the historic centre of the city
- 4 km from the Moskovskaya and Zvezdnaya subway stations, shuttle bus

## Facts

- Total gross building area of 20,400 m<sup>2</sup>
- Closed heated car park building with total area of 4,700 m<sup>2</sup>
- 445 parking spaces on 2 levels
- approx. 2,500 m<sup>2</sup> storage area
- approx. 2,200 m<sup>2</sup> of office space





An aerial night photograph of a city skyline. In the foreground, a large, modern hotel building with a grid-like facade is illuminated from within, with the word "INTERCONTINENTAL" visible in glowing letters across its upper section. The rest of the city is a dense collection of lit-up buildings and streets, with a dark sky above. A semi-transparent blue rectangle is overlaid on the upper part of the image, containing the title text.

---

# *Hotel Assets*

---

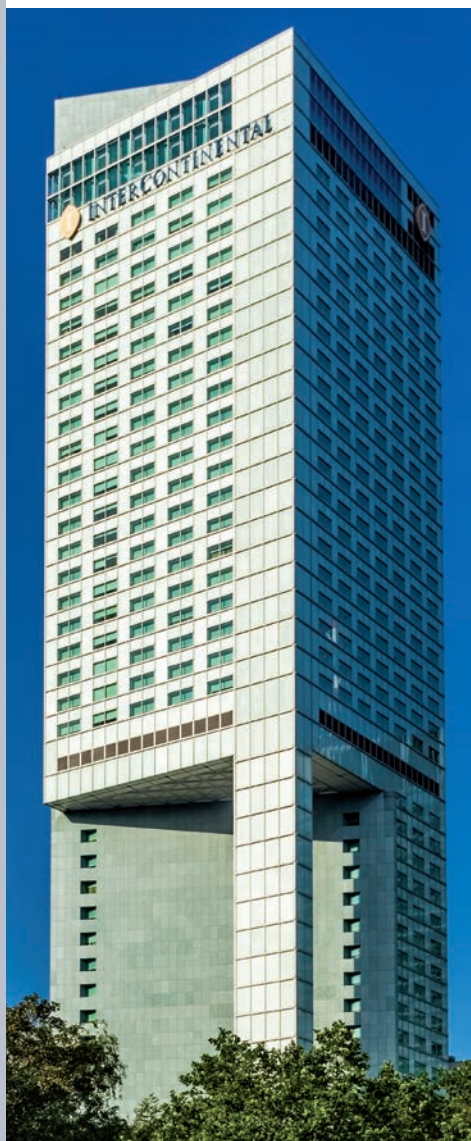
warimpex

## Address:

ul. Emilii Plater 49  
 PL-00-125 Warsaw  
 warsaw@ihg.com  
 www.warsaw.intercontinental.com



Managed by InterContinental Hotels Group



**Warimpex share:** 50%\*

**Opened:** 2003

**Renovated:** 2019

\*developed, sold and leased by Warimpex

### Location

- In Warsaw's financial district, in the heart of the capital
- 8 km from the international airport

### Facts

- Tallest 5-star hotel in Poland
- 14 conference rooms with a total area of more than 1,340 m<sup>2</sup>
- The Riverview Wellness Centre on the 43<sup>rd</sup> and 44<sup>th</sup> floors, with views of the Vistula River and the city, is equipped with a swimming pool, gym and aerobics room, sauna, steam bath, jacuzzi and spa
- Several restaurants and bars
- Underground parking for 175 cars

### Room types

414 rooms, suites and luxury apartments in total:

- 131 standard rooms
- 26 business rooms
- 97 club rooms
- 88 deluxe rooms
- 30 junior suites
  - 3 senior suites
- 24 apartments
- 14 corner suites
  - 1 presidential suite

**Address:**

**Hilpertstraße 27**  
**DE-64295 Darmstadt**  
**www.greethoteldarmstadt.com**

★★★★S

**greet**  
 hotel darmstadt

*Managed by Cycas Hospitality*  
*Franchised by Accor*

**Warimpex share:** 100%

**Constructed:** 1988

**Purchased:** April 2019

**Reopened:** September 2019

**Refurbished:** 2020/2021

**Location**

- Close to many renowned companies (Deutsche Telekom, Software AG, Borg Warner Akasol, European Space Agency, Eumetsat, Merck, Evonik, Röhm, P&G, Wella)
- Close to the motorway –1 km
- 15 min to Frankfurt Airport
- 10 min walk to central railway station
- Close to renowned technical universities (TU-Darmstadt, h\_da)

**Facts**

- Car parking
- Restaurant
- Bar 24/7
- 26 meeting rooms (2,000 m<sup>2</sup>)
- Auditorium
- 5,000 m<sup>2</sup> private garden space
- 1,500 m<sup>2</sup> offices & co-working spaces

**Room types**

- 330 rooms & suites
- 4 different room types
- student accommodation



Address:

**Startovaya 6 Lit. A**  
**RU-196210 St. Petersburg**  
**info@airportcityplaza.ru**  
**www.airportcityplaza.ru**



**Warimpex share:** 100%

**Opened:** 12/2011

**Location**

- 1,500 m from the airport Pulkovo, shuttle bus
- Just off the Pulkovo superhighway
- Close to the Ring Road (Pulkovo Exit)
- Close to high-speed road
- 15 km from the historic centre of the city
- 4 km from the Moskovskaya and Zvezdnaya subway stations, shuttle bus

**Facts**

- State-of-the-art conference centre with 11 multi-functional meeting rooms (1,130 m<sup>2</sup>)
- Restaurant, cocktailbar, "illy"-cafe
- Spa & fitness centre
- Car parking

**Room types**

294 modern designed double rooms and suites equipped with high-quality amenities









An architectural rendering of a modern, multi-story building with a prominent glass facade and numerous green terraces. The building is set against a backdrop of a cityscape and a blue sky with scattered clouds. Two small airplanes are visible in the sky. The foreground shows a paved area with trees and people walking. The overall scene is bright and clear, suggesting a sunny day.

*Projects in  
development*

warimpex

## Chopin co-living/office project

CRACOW

Address:

ul. Przy Rondzie 2

PL-31-547 Cracow

**Warimpex share:** 100%

**Opening:** 2026

### Location

- Prime location in the business district of Cracow
- Direct connection to public transportation at Rondo Mogilskie
- Vicinity of courts and public offices

### Facts

- Class A office
- 9 floors above ground (office space, retail space)
- 3 underground levels (with approx. 234 parking spaces)
- approx. 10,000 m<sup>2</sup> office space, 237 apartments and 2,000 m<sup>2</sup> retail space
- Leasable office space per floor up to 1,200 m<sup>2</sup>
- Direct connection to Vienna House Easy by Wyndham Cracow



# MC 55 multi-use building

BIALYSTOK

Address:

ul. Bohaterów Monte Cassino 55  
PL-15-873 Białystok

**Warimpex share:** 100%

**Opening:** 2026

## Location

- Prime location vis-à-vis main bus and train station
- Direct connection to public transportation
- Vicinity to city Centre
- High visibility

## Facts

- Class A office with shopping area
- 6 floors above ground (office space, retail space)
- 2 underground levels (with approx. 396 parking spaces)
- Up to 33,431 m<sup>2</sup> leasable office space and 5,024 m<sup>2</sup> leasable retail space
- Leasable space per floor approx. 4,600 m<sup>2</sup>



## West Yard 29

DARMSTADT

Address:

Hilpertstraße 29

DE-64295 Darmstadt

**Warimpex share:** 100%

**Opening:** 2026

### Location

- Close to many renowned companies (Deutsche Telekom, Software AG, Borg Warner Akasol, European Space Agency, Eumetsat, Merck, Evonik, Röhm, P&G, Wella)
- Close to the motorway –1 km
- 15 min to Frankfurt Airport
- 10 min walk to central railway station
- Close to renowned technical universities (TU-Darmstadt, h\_da)

### Facts

- Class A office
- Taxonomy + ESg compliant
- 6 floors above ground (office space, café)
- 3 underground levels (with underground parking spaces for approx. 297 cars and 224 bikes)
- 12,500 m<sup>2</sup> leasable office space
- Leasable space per floor approx. 1,950 m<sup>2</sup>
- Flexible office sizes from 180 m<sup>2</sup>









---

# *References*

---



warimpex

## *Hotels*

|  |                   |                                    |
|--|-------------------|------------------------------------|
| <b>Palais Hansen</b> Vienna, AT<br>5-star hotel, 152 rooms and suites                          | Opened in 2013    | Sold in 2023                       |
| <b>Vienna House Dream Castle</b> Marne-la-Vallée, FR<br>4-star hotel, 397 rooms and suites     | Opened in 2004    | Sold in 2019                       |
| <b>Vienna House Magic Circus</b> Marne-la-Vallée, FR<br>4-star hotel, 396 rooms and suites     | Opened in 2003    | Sold in 2019                       |
| <b>Vienna House Dvořak</b> Karlovy Vary, CZ<br>4-star hotel, 126 rooms                         | Opened in 1990    | Sold in 2019                       |
| <b>Vienna House Diplomat</b> Prague, CZ<br>4-star hotel, 398 rooms and suites                  | Opened in 1990    | Sold in 2017                       |
| <b>angelo</b> Pilsen, CZ<br>4-star hotel, 144 rooms and suites                                 | Opened in 2008    | Sold in 2017                       |
| <b>andel's</b> Łódź, PL<br>4-star hotel, 278 designer rooms and suites                         | Opened in 2009    | Sold in 2017                       |
| <b>andel's</b> Cracow, PL<br>4-star hotel, 159 rooms and suites                                | Opened in 2007    | Sold in 2009<br>operated till 2017 |
| <b>Vienna House Easy Chopin</b> Cracow, PL<br>3-star hotel, 221 rooms and suites               | Opened in 1992    | Sold in 2017                       |
| <b>angelo</b> Katowice, PL<br>4-star hotel, 203 rooms, suites and apartments                   | Opened in 2010    | Sold in 2017                       |
| <b>Vienna House Amber Baltic</b> Międzyzdroje, PL<br>4-star hotel, 191 rooms and suites        | Opened in 1991    | Sold in 2017                       |
| <b>angelo</b> Bucharest, RO<br>4-star hotel, 177 rooms and suites                              | Opened in 2001    | Sold in 2017                       |
| <b>angelo</b> Prague, CZ<br>4-star hotel, 168 rooms and suites                                 | Opened in 2006    | Sold in 2016                       |
| <b>angelo Congress and Airporthotel</b> Ekaterinburg, RU<br>4-star hotel, 211 rooms and suites | Opened in 2009    | Sold in 2015                       |
| <b>Liner Hotel</b> Ekaterinburg, RU<br>3-star hotel, 152 rooms                                 | Opened in 1986    | Sold in 2015                       |
| <b>andel's</b> Berlin, DE<br>4-star S hotel, 557 rooms and suites                              | Opened in 2009    | Sold in 2015                       |
| <b>Savoy Hotel</b> Prague, CZ<br>4-star hotel, 61 luxurious rooms and suites                   | Opened in 1994    | Sold in 2014                       |
| <b>Le Palais Hotel</b> Prague, CZ<br>5-star hotel, 72 luxurious rooms and suites               | Opened in 2003    | Sold in 2013                       |
| <b>Palace Hotel</b> Prague, CZ<br>5-star hotel, 114 rooms and 10 luxury suites                 | Opened in 1989    | Sold in 2013                       |
| <b>angelo</b> Munich, DE<br>4-star hotel, 146 rooms  | Opened in 2008    | Sold in 2013                       |
| <b>Radisson Blu Sobieski Hotel</b> Warsaw, PL<br>4-star hotel, 435 rooms                       | Purchased in 2006 | Sold in 2011                       |

|   |                |              |
|---|----------------|--------------|
| <b>andel's Suites</b> Prague, CZ<br>51 studios and apartments         | Opened in 2003 | Sold in 2005 |
| <b>andel's</b> Prague, CZ<br>4-star hotel, 239 rooms                  | Opened in 2002 | Sold in 2005 |
| <b>Sheraton Hotel</b> Warsaw, PL<br>5-star hotel, 350 rooms           | Opened in 1996 | Sold in 1996 |
| <b>Průhonice Sport Hotel</b> Prague, CZ<br>4-star hotel, 100 rooms    | Opened in 1990 | Sold in 1990 |
| <b>Holiday Inn Hotel</b> Warsaw, PL<br>4-star hotel, 172 rooms        | Opened in 1989 | Sold in 1989 |
| <b>Forum Hotel</b> Prague, CZ<br>4-star hotel, 560 rooms              | Opened in 1989 | Sold in 1989 |
| <b>Jelenia Gora Hotel</b> Jelenia Gora, PL<br>4-star hotel, 172 rooms | Opened in 1989 | Sold in 1987 |
| <b>Panorama Hotel</b> Prague, CZ<br>4-star hotel, 456 rooms           | Opened in 1983 | Sold in 1983 |
| <b>Novotel Hotel</b> Budapest, HU<br>4-star hotel, 324 rooms          | Opened in 1982 | Sold in 1982 |
| <b>Penta Hotel</b> Budapest, HU<br>4-star hotel, 400 rooms            | Opened in 1982 | Sold in 1982 |

## Shopping Center

|   |                |              |
|---|----------------|--------------|
| <b>Velký Špalíček – Shopping Center &amp; Multiplex</b> Brno, CZ<br>Shopping and entertainment mall | Opened in 2001 | Sold in 2006 |
|---|----------------|--------------|

## Offices

|   |                   |              |
|---|-------------------|--------------|
| <b>Office B52</b> Budapest, HU<br>Baross utca 52, HU-1085 Budapest  | Aquired in 2018   | Sold in 2022 |
| <b>Parkur Tower</b> Warsaw, PL, Ursynów District/Mokotów District<br>ul. Kłobucka 25, PL-02-699 Warsaw                    | Opened in 2006    | Sold in 2017 |
| <b>Le Palais Office</b> Warsaw, PL<br>ul. Prozna 7-9, PL-00-107 Warsaw  | Opened in 2013    | Sold in 2013 |
| <b>Csalogány Office</b> Budapest, HU<br>Csalogány utca 47-49, H-1027 Budapest   | Purchased in 2003 | Sold in 2009 |
| <b>Pauler Office</b> Budapest, HU<br>3,095 m <sup>2</sup> net leasable office space                                       | Purchased in 2006 | Sold in 2008 |
| <b>Anděl City Office Building SO 11</b> Prague, CZ<br>AAA office building, 4,000 m <sup>2</sup> net leasable office space | Opened in 2007    | Sold in 2007 |
| <b>Warsaw Towers</b> Warsaw, PL<br>approx. 20,000 m <sup>2</sup> net leasable office space                                | Opened in 1999    | Sold in 2000 |
| <b>Kolmex Office Building</b> Warsaw, PL<br>8-floor office building   | Opened in 1992    | Sold in 1992 |

andel's\*\*\*\* Hotel  
Łódź, PL



andel's\*\*\*\* Hotel  
Berlin, DE



andel's\*\*\*\* Hotel  
Cracow, PL



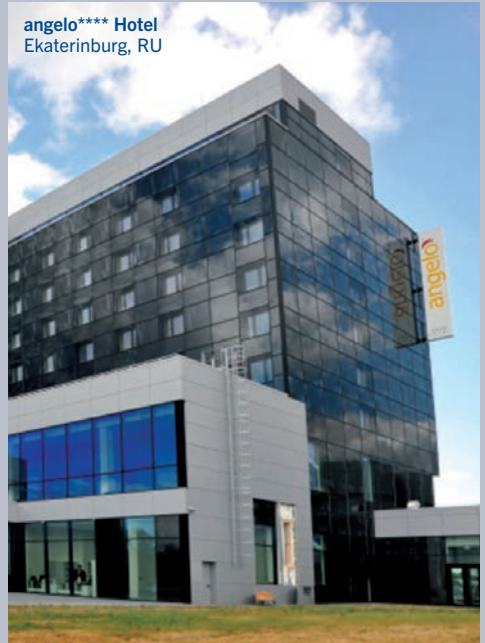
angelo\*\*\*\* Hotel  
Katowice, PL



angelo\*\*\*\* Hotel  
Prague, CZ



angelo\*\*\*\* Hotel  
Ekaterinburg, RU



Palace\*\*\*\*\* Hotel  
Prague, CZ



LePalais\*\*\*\*\* Hotel  
Prague, CZ



Dvorak\*\*\*\*  
Karlovy Vary, CZ



Magic Circus\*\*\*\*  
Paris, FR



Dream Castle\*\*\*\*  
Paris, FR



**Amber Baltic\*\*\*\* Hotel**  
Międzyzdroje, PL



**Savoy\*\*\*\* Hotel**  
Prague, CZ



**angelo\*\*\*\* Hotel**  
Pilsen, CZ



**angelo\*\*\*\* Hotel**  
Bucharest, RO



andel's Hotel\*\*\*\* + Suites  
Prague, CZ

FIRST DESIGN HOTEL CEE



angelo\*\*\*\* Hotel  
Munich, DE



Radisson Blu Sobieski Hotel  
Warsaw, PL



Vienna House Diplomat\*\*\*\* Hotel  
Prague, CZ





Palais Hansen \*\*\*\*\* Hotel  
Vienna, AT



Novotel Hotel\*\*\*\*  
Budapest, HU



Sheraton Hotel\*\*\*\*\*  
Warsaw, PL



**Cetelem Office**  
Budapest, HU

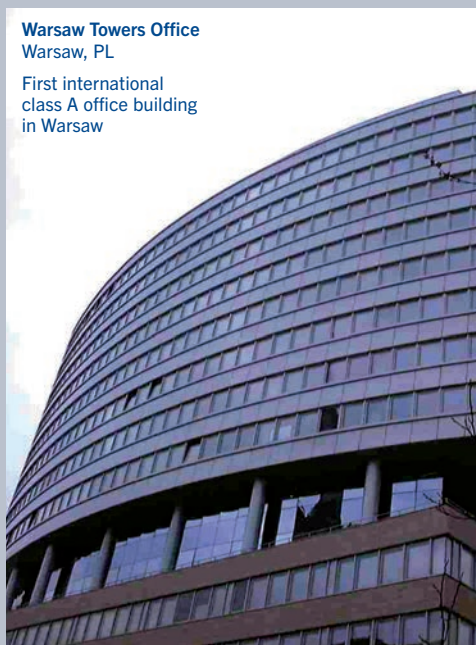


**Pauler Office**  
Budapest, HU



**Warsaw Towers Office**  
Warsaw, PL

First international  
class A office building  
in Warsaw



**Le Palais Office**  
Warsaw, PL



Lined writing area with 21 horizontal lines.



# warimpex

---

*Experts with a  
40-year track record  
in the hotel and office  
investment market*

---

**Warimpex Finanz- und Beteiligungs AG**

Floridsdorfer Hauptstraße 1, A-1210 Vienna

T +43 1 31055 00 · F +43 1 31055 00-122

© 02/2024 · Errors and omissions excepted

**[www.warimpex.com](http://www.warimpex.com)**